

Fort Lee Defense Community Enclave (DCE): Preserving Army Logistics Heritage Through Strategic Consolidation at Fort Lee

Executive Summary

The Fort Lee Defense Community Enclave (DCE) is an innovative Public-Private Partnership (P3) initiative leveraging the Army's Enhanced Use Lease (EUL) authority to modernize infrastructure, strengthen mission alignment, and enhance public access — at no additional cost to taxpayers.

At the center of the DCE is the creation of a unified **Army Logistics Museum Complex** at Fort Lee, consolidating:

- U.S. Army Women's Museum
- U.S. Army Quartermaster Museum
- Ordnance Training Support Facility
- **U.S. Army Transportation Museum (identified for closure in 2027/28)**

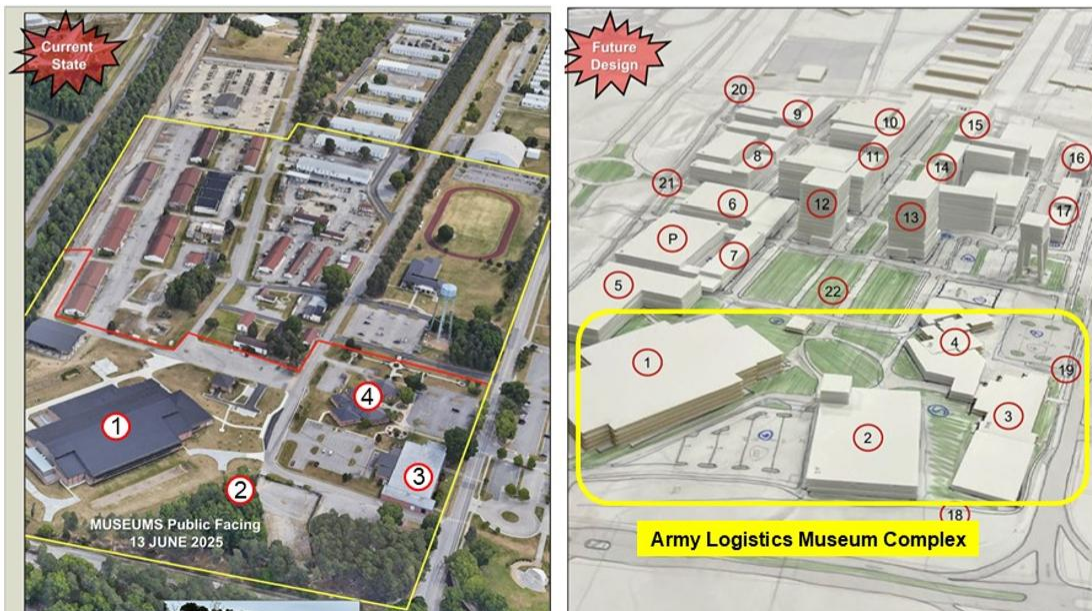
The potential closure of the Transportation Museum presents immediate risk to artifact preservation, institutional identity, and public access.

The DCE provides a deliberate, sustainable solution: integration — not dispersal.



Fort Lee Defense Community Enclave 101

Vision: The **Defense Community Enclave (DCE)** is a Walkable District with Accessible Military Museums, Modern Community Facilities and Connected Parks and Plazas. Fort Lee intends to utilize the Enhanced Use Lease Authority to achieve the DCE.



The Strategic Risk

The Army Transportation Museum at Joint Base Langley-Eustis has previously been identified for closure in FY27/28 without a clearly defined long-term disposition plan for its artifacts.

Absent a structured transition:

- Artifacts risk warehouse storage or dispersal
- Transportation Corps heritage becomes fragmented
- Public access to Army mobility history diminishes
- The Army's sustainment narrative weakens

POC: Mike.Flanagan.usma86@gmail.com ; More info at <https://www.carmava.org/DCE>

Fort Lee Defense Community Enclave (DCE): Preserving Army Logistics Heritage Through Strategic Consolidation at Fort Lee

Transportation is a core capability within the Army's Logistics Branch. Its history underwrites force projection, joint mobility, and contested logistics — central elements of future Army operations. This is not simply a museum issue. It is a strategic Army identity issue.

Why Fort Lee Is the Logical Solution

Fort Lee is home to the Sustainment Center of Excellence — the Army's institutional center for logistics. Consolidating Transportation heritage into a unified Army Logistics Museum Complex would:

- Integrate Quartermaster, Ordnance, Women's Army, and Transportation Corps history into a coherent sustainment narrative
- Preserve Corps and Regimental identity within a modernized framework
- Improve collections stewardship through consolidated, climate-controlled facilities
- Expand public access beyond the current limited schedule
- Establish a nationally recognized Army Logistics Museum Complex

Rather than allowing Transportation heritage to fragment, the DCE gives it a permanent, mission-aligned home.

The Public-Private Partnership (EUL) Model

The DCE leverages Enhanced Use Lease authority to:

- Partner with private developers
- Generate recurring revenue streams
- Offset museum sustainment shortfalls
- Modernize aging infrastructure without new federal appropriations

The museums serve as public anchors within a broader mixed-use district that enhances quality of life, strengthens civil-military integration, and supports regional economic development.

This is a no-cost solution that preserves national military heritage while strengthening mission alignment.

Request to GAMVC

CaRMA respectfully requests that the General Assembly Military and Veteran Caucus:

1. Send a Letter of Support to the Virginia Congressional Delegation

Encouraging support for:

- The Fort Lee Defense Community Enclave as an innovative P3 solution
- Consolidation of Army Logistics museums at Fort Lee

2. Request the Virginia Delegation Write the Secretary of the Army:

- Retain the U.S. Army Women's Museum at Fort Lee
 - Direct development of a plan to relocate the Army Transportation Museum to Fort Lee as part of the Army Logistics Museum Complex
 - Preserve Transportation Corps heritage through integration
-

Bottom Line

The Army Transportation Museum faces closure in 2027/28.

The Fort Lee Defense Community Enclave provides a strategic, no-cost solution that:

- Preserves Transportation Corps heritage
- Retains the Army Women's Museum
- Modernizes infrastructure
- Strengthens the Army's sustainment narrative
- Enhances regional economic development

POC: Mike.Flanagan.usma86@gmail.com ; More info at <https://www.carmava.org/DCE>

Fort Lee Defense Community Enclave (DCE): Preserving Army Logistics Heritage Through Strategic Consolidation at Fort Lee